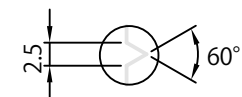
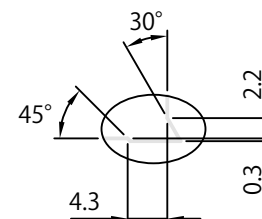
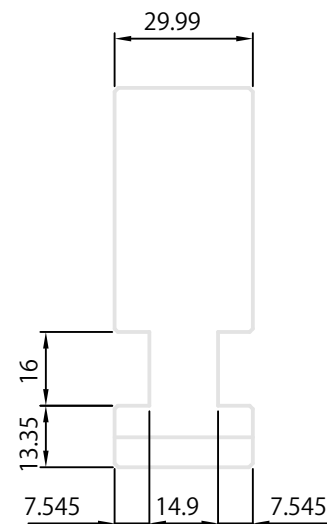


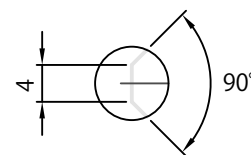
A詳細



B詳細



C詳細



D詳細

一般公差				品名	FT-PS12用硬爪
尺寸範圍	許容差	單位	MM	品番	逆爪
1-4	±0.05				
4-16	±0.07	材質	SCM415	品番	FT-PS12-02
16-63	±0.1	投影			
63-250	±0.2	比例	1:1.2		
250-1000	±0.3				
1000-1500	±0.5				